



Canada Silver Cobalt Works Inc.  
3028 Quadra Court  
Coquitlam, B.C., V3B 5X6

Wayne Cheveldayoff  
Corporate Communications  
waynecheveldayoff@gmail.com

# EBY-OTTO PROPERTY

PRIMARY TARGET:

GOLD

EXPLORATION STAGE

PHASE 3

## OVERVIEW

A total land package of 1,000 hectares derived from three different option agreements. Most of the claims are currently permitted for drilling, with certain claims being permitted for line cutting, geophysics, or outcrop stripping.



## GEOLOGY

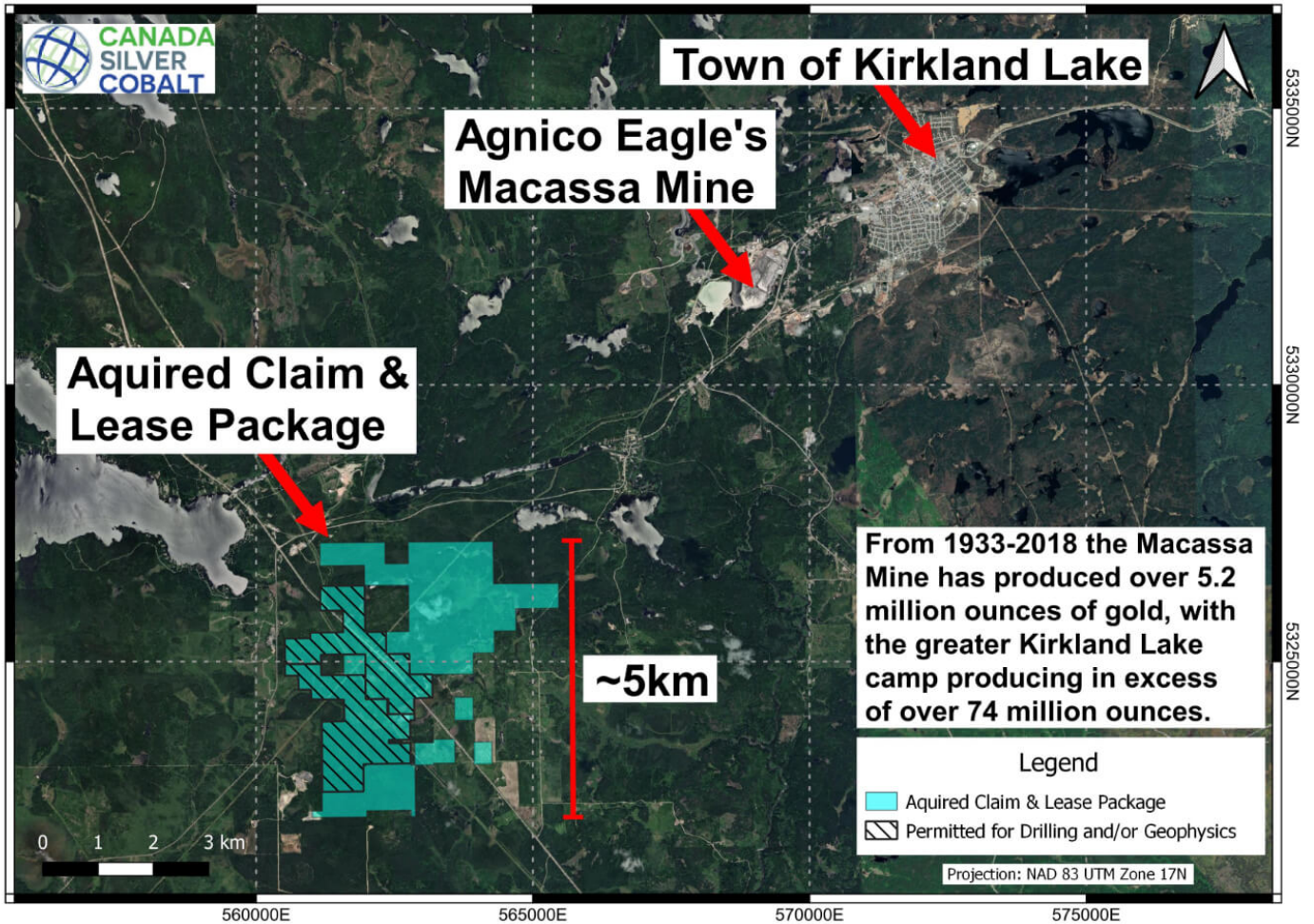
**In the Abitibi Greenstone belt, south of Cadillac Larder Lake Break**

Has historical gold showings and quartz flooding that outcrop at surface.

Contains a large portion of the Eby-Otto fault that has historical gold showings, pits, and small-scale shafts with values up to 5.8 g/t Au over 1.5m.

Contains zones of strong sericite, iron carbonate, bleaching, and strong pyrite.





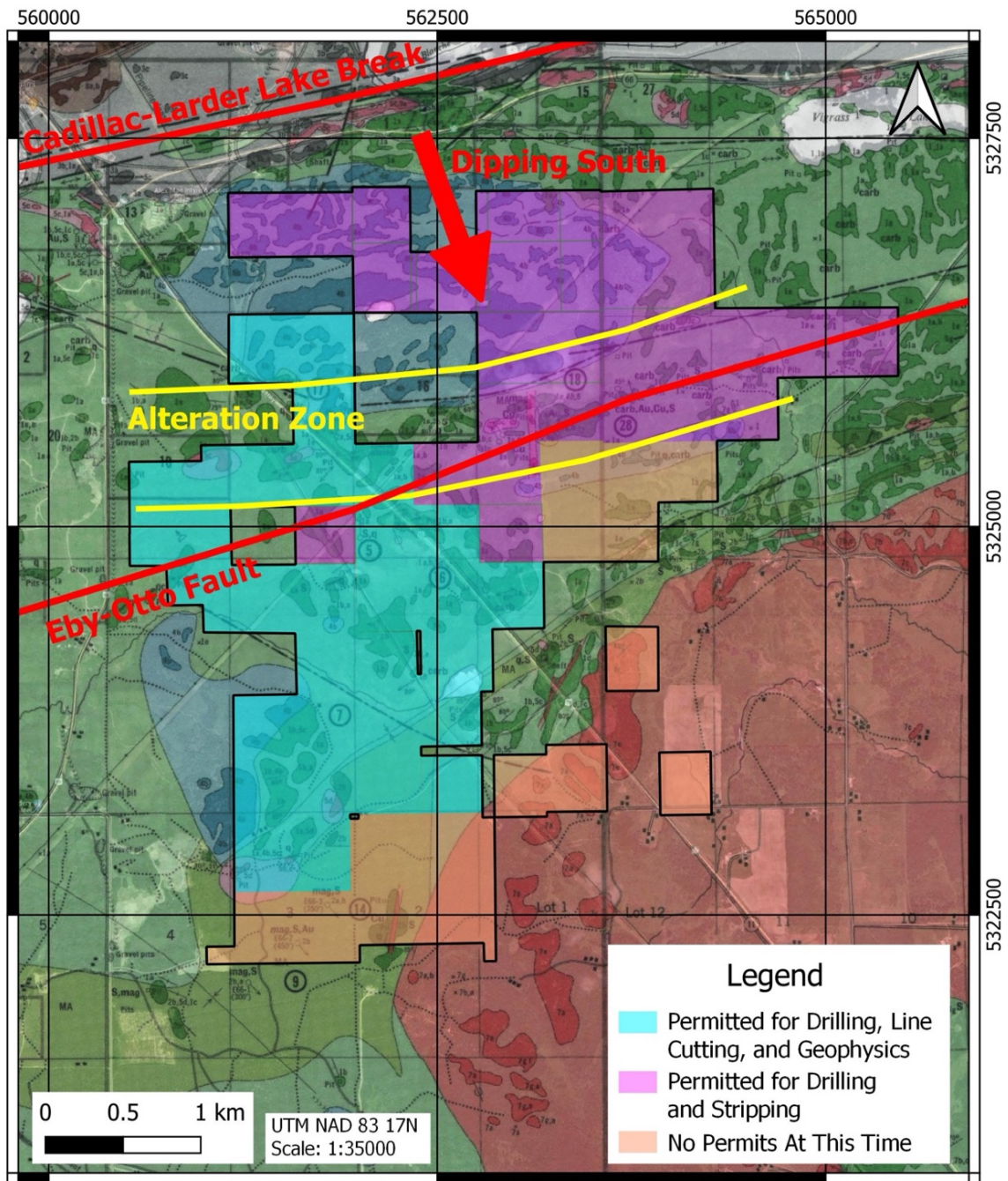
**LOCATION**

**5 km southwest of the high-grade Macassa Gold Mine. It is contiguous to claims owned by Agnico Eagle towards the northeast.**

**PHASE 1**

The first phase will consist of an initial site assessment to determine the logistics of future operations and will provide the company time to receive any pending surface exploration work permits. Surveying will be completed for key Standard Iron Bars (SIB), legacy claim posts, and access points to refresh select existing cut line grids.

An overall geological assessment will be completed based on field work consisting of geological mapping, stripping key outcrops, and possibly further MMI geochemical or targeted and detailed ground geophysics if the technical team deems it necessary. The company recently concluded a drone magnetic survey on the entire claim package conducted by EarthEx Geophysical Solutions Inc.



## PHASE 2

The second phase of exploration will be based on the results from Phase 1 and will expand to include diamond drilling to intercept specific regional structures based on the initial geophysical data provided by the drone magnetic survey, historic geological data, regional geophysics, geological mapping, and existing electromagnetic (EM) surveys completed by geologist Doug Robinson prior to the Company's acquisition of the property.

## PHASE 3

### Expand on Drilling and Field Work

Following the completion of drone mag survey and the data had been interpreted, the technical team identified a number of prospective drill targets and drilling began in late 2022.