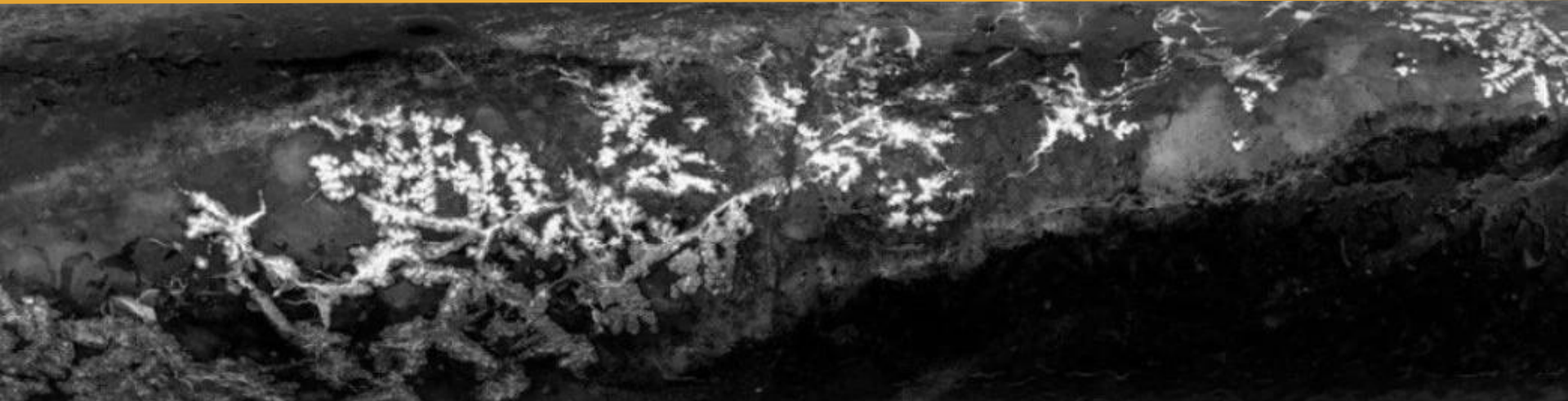


NORD PRECIOUS METALS

Corporate Presentation

May 2026

TSX-V: NTH . OTCQB: CCWOF . FF: QN3



FORWARD LOOKING STATEMENTS



DISCLAIMER

Neither the TSX Venture Exchange nor its Regulation Service Provider (as that term is defined in the policies of the TSX Venture Exchange) accepts responsibility for the adequacy or accuracy of this material.

This presentation may contain forward-looking statements including but not limited to comments regarding mineral resources and the timing and content of upcoming work programs, geological interpretations, receipt of property titles, potential mineral recovery processes, etc. Forward-looking statements address future events and conditions and therefore, involve inherent risks and uncertainties.

Actual results may differ materially from those currently anticipated in such statements. The Company does not undertake to update any forward looking information in this presentation or other communications unless required by law.

QUALIFIED PERSON

The technical information in this corporate presentation was reviewed and approved by Nord Precious Metals Mining Inc. President and Chief Operating Officer Matt Halliday, P. Geo., who is a Qualified Person in accordance with National Instrument 43-101.

Nord Precious Metals



Snapshot

Previous producing mines

57 Moz

Combined Castle, Beaver, Miller Lake (1)

Ontario Canada

Tier 1

jurisdiction

Market Cap

\$32.75M CAD

07-05-26

Share Price

0.24 CAD

12-05-26

Strong relationship with

First Nations

in place with agreements

Large exploration potential

In Miller Lake Basin, Where Only Periphery Has Been Explored

Excellent **infrastructure**

Quick access to labour force

High grades

8,582 g/t

Inferred average grade
*Historic resource (2)

[1D](#) [5D](#) [1M](#) [3M](#) [6M](#) [1Y](#) [5Y](#) [ALL](#)



Nord Precious Metals Cobalt Camp



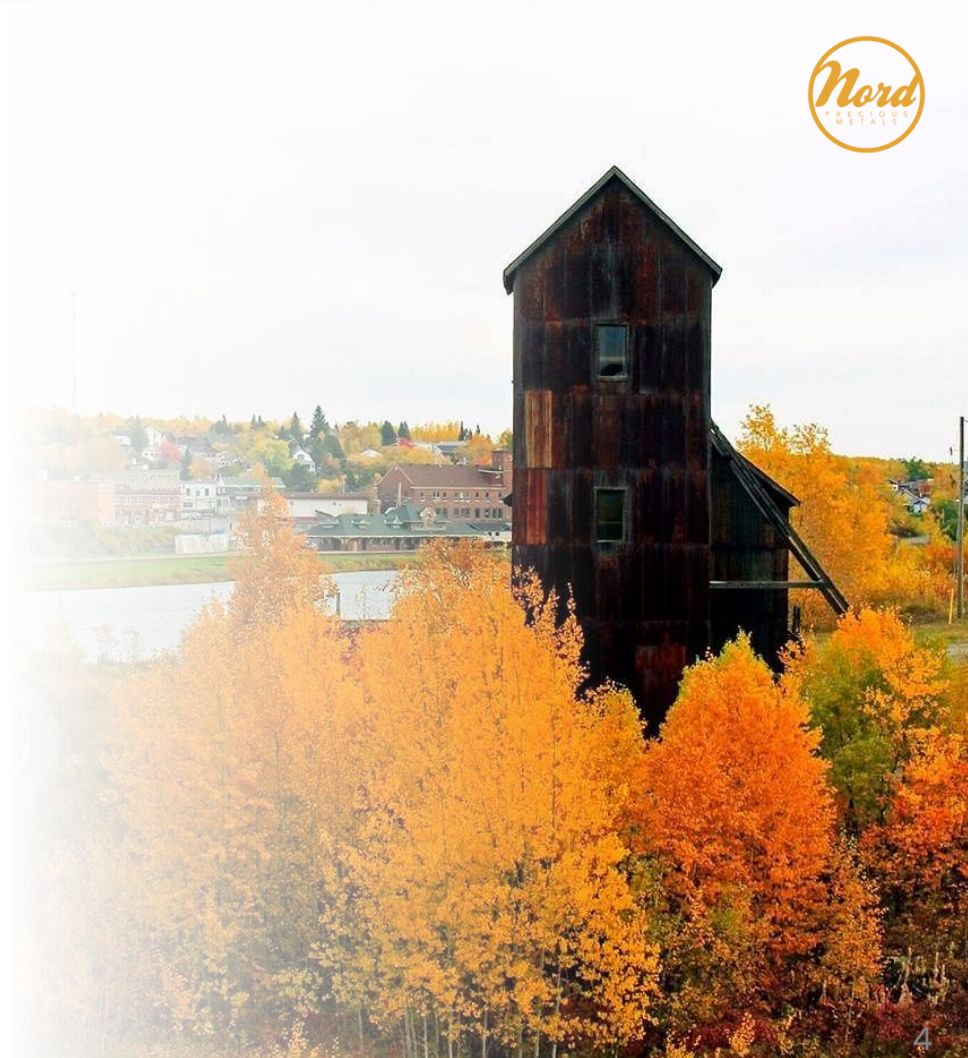
Ontario is a Tier 1 mining jurisdiction

The Cobalt Camp is one of the world's highest-grade primary silver districts

500 Moz+

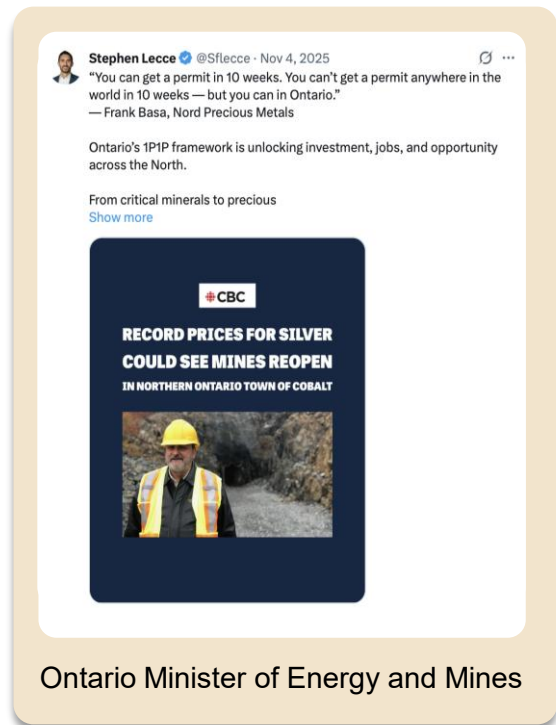
of historic production and dense network of past-producing mines.

Narrow, high-grade vein mining



Government & Media Validation

The Moment for Ontario Silver

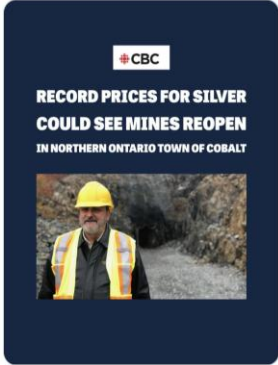


Stephen Lecce @Sflecce · Nov 4, 2025

"You can get a permit in 10 weeks. You can't get a permit anywhere in the world in 10 weeks — but you can in Ontario."
— Frank Basa, Nord Precious Metals

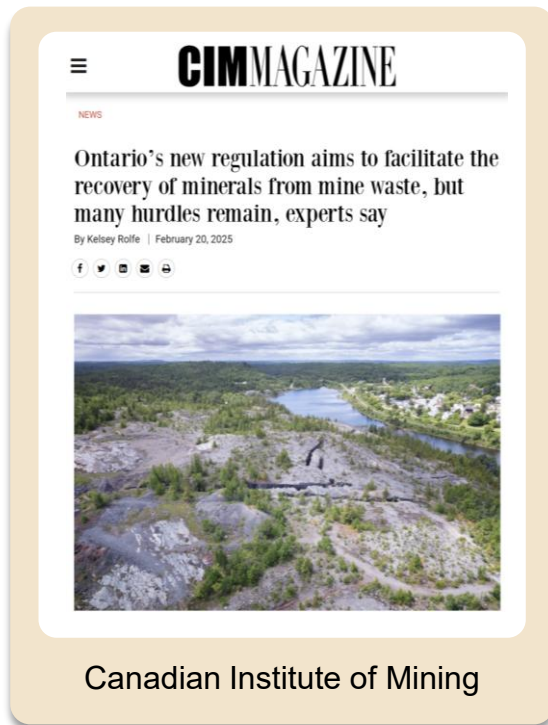
Ontario's 1PIP framework is unlocking investment, jobs, and opportunity across the North.

From critical minerals to precious
[Show more](#)



**RECORD PRICES FOR SILVER
COULD SEE MINES REOPEN
IN NORTHERN ONTARIO TOWN OF COBALT**

Ontario Minister of Energy and Mines




CIMMAGAZINE

NEWS

Ontario's new regulation aims to facilitate the recovery of minerals from mine waste, but many hurdles remain, experts say

By Kelsey Rolfe | February 20, 2025



Canadian Institute of Mining

Historic tailings in Canadian mining camps such as Cobalt have remained largely **untouched for 50 to well over 100 years** as disturbing historical tailings risked inheriting all environmental liability associated, permits took years, and required closure bonds.

As of July 2025, this changed with the Recovery Permit: Short turnaround, liability protections, and closure requirements waived.

STLLR Gold in Timmins as of early 2026 has already procured this permit.

TSX-V: NTH | OTCQB: CCWOF | FF: QN3

ONTARIO

Here PROJECTS

MACASSA MINE

Agnico Eagle

P&P: 2.20 Moz Au, M&I: 0.68 Moz Au

YOUNG-DAVIDSON MINE

Alamos Gold

P&P: 2.98 Moz Au, M&I: 1.49 Moz Au

UPPER BEAVER PROJECT

Agnico Eagle

P&P: 2.80 Moz Au, 54.9 kt Cu
Ind.: 0.50 Moz Au

CASTLE MINE PROPERTY

GOWGANDA SILVER TAILINGS

1.94 Mt @ 47.5 g/t Ag (~2.96 Moz Ag)

Gowganda

GOWGANDA CAMP

Hist. Prod.: ~60 Moz Ag

LANGIS MINE

Brixton Metals

Hist. Prod.: 10.0 Moz Ag

CASEY TWP CAMP

RIDEOUT SHEAR ZONE

144

65

560

ELK LAKE CAMP

CADILLAC-LARDER FAULT ZONE
LAKE-TEMISKAMING STRUCTURE

Shining Tree

~100 km

JUBY GOLD PROJECT

Aris Gold Corp.

M&I: 1.0 Moz Au @ 1.5 g/t Au

CÔTÉ GOLD PROJECT

IAMGOLD

P&P: 7.3 Moz Au

TEMISKAMING TESTING LAB / MILL

Permitted Processing Facility,
Commissioned Gravity Circuit,
Bullion Furnace, Analytical Lab

Cobalt

MAIN COBALT CAMP

Hist. Prod.: >500 Moz Ag

SILVER CENTRE MINES

Hist. Prod.: 20.0 Moz Ag

SOUTH LORRAIN CAMP



ONTARIO
QUEBEC

- Gold / Silver Projects
- Silver Mining Camps
- Major Road
- Minor Road
- Fault
- Diabase
- Huronian Sediments

- Nord Precious Metals
- IAMGOLD
- Alamos Gold
- Agnico Eagle
- Brixton Metals
- Staked

0 10 20 km

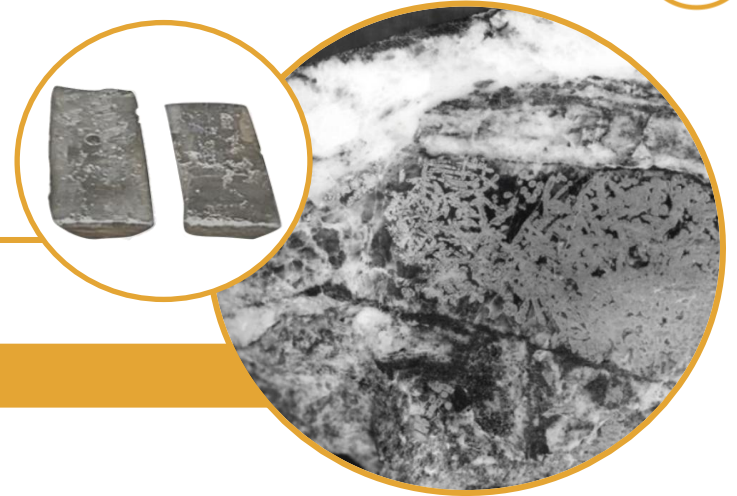
High Level Strategy



Gowganda Camp Consolidation

Primary Silver

Secondary Cobalt Copper Nickel



Dual Track Strategy

Tailings Re-Processing

Gowganda (Miller Lake-O'Brien):
47.5 g/t, 1,940,000 tonnes



Castle Mine:
459 g/t Ag

Exploration

Castle:
Past producer:
9.4 Moz Ag,
376 K lbs Co

Miller Lake-O'Brien:
Produced 40.7 Moz Ag
785.7 K lbs Co

Castle East:
Historic Inferred Average
Grade 8,582 g/t, 32.9 K
tonnes



Nord **CASTLE MINE**
PROJECT



CASTLE MINE
Hist. Prod.: **9,410,095 oz Ag,**
376,392 lbs Co (Castle-Trethewey)

UPPER BONSTALL

LOWER BONSTALL

MILLER LAKE-O'BRIEN
43.2 Moz Ag, 787,350 lbs Co

GOWGANDA SILVER TAILINGS
1.94 Mt @ 47.5 g/t Ag for
~2.96 Moz Ag

CASTLE NO. 1

WALSH

TONOPAH

Hist. Prod.: **~60 Moz Ag**
within 2km radius

MILLERETTE
611,822 oz Ag

CAPITOL
10.8 Moz Ag, 209,662 lbs Co

CASTLE EAST DISCOVERY
0.3m @ 89,853 g/t Ag

MORRISON

Properties

Group of properties in the Historic Cobalt Camp

- Newly Acquired BMR Leases
- Nord Mining Leases
- Nord Mining Claims
- Staked
- X Past-Producing Mine

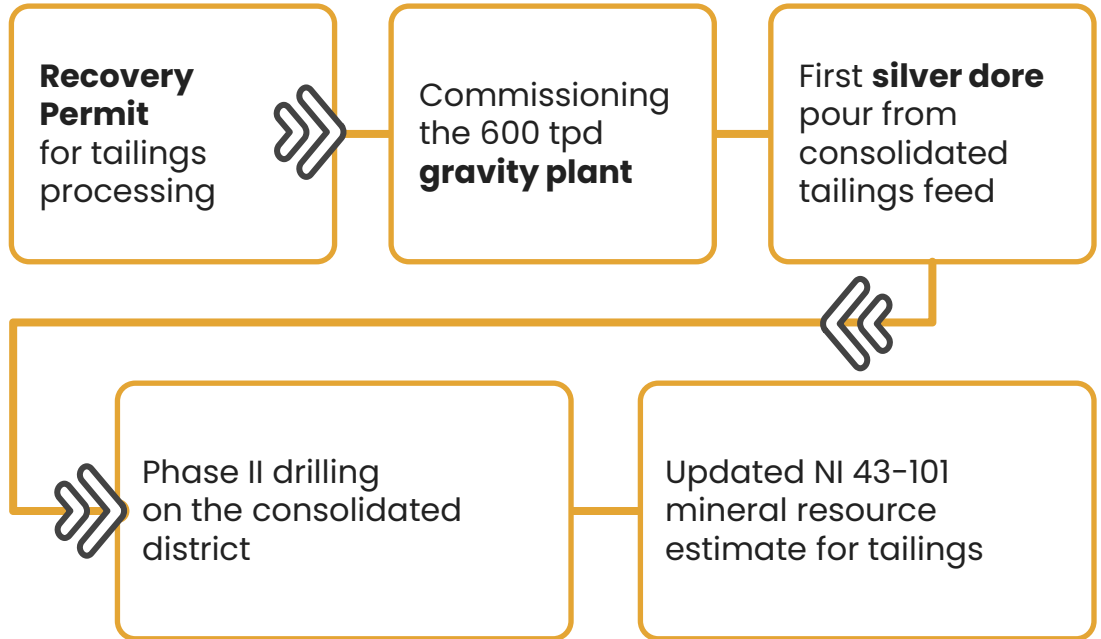


560



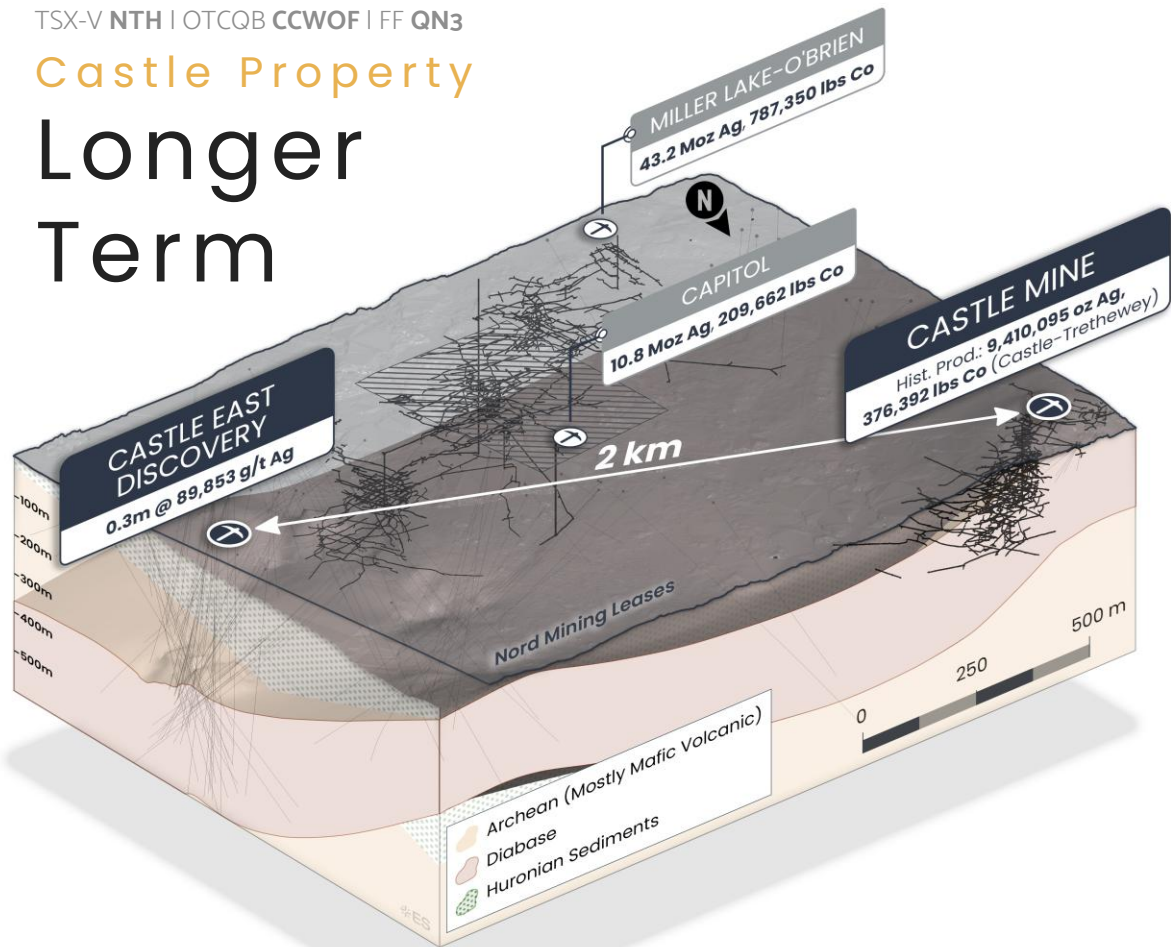
Next Year

Short Term Schedule



Castle Property

Longer Term



Medium-term

30,000-metre drill programme underway. Targeting boundary zones between past producers for the first time.

Long-term

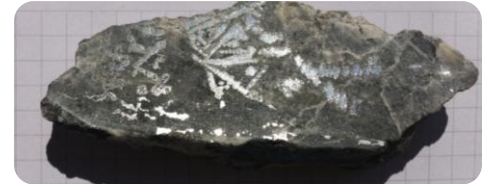
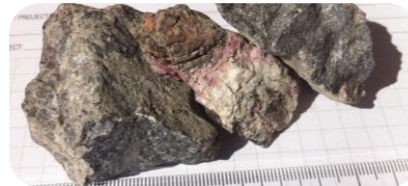
District-scale resource growth. Largest consolidated land package in the district's history. Over half a billion ounces produced historically. Alternative extraction scenarios under early evaluation.

Nord Precious Metals Castle Mine



Past producer of **9.4 million ounces silver** and **376,000 lbs cobalt**.

- 3 shafts accessing 11 levels to 259 m depth
- Underground drilling returned up to 5.2% Co and 13,208 g/t Ag
- Miller Creek tailings: up to 411 g/t AgEq
100% owned properties
- Direct access via Hwy 560W from Elk Lake
- Contiguous to multiple historic mines





Nord Precious Metals

Castle East Silver

* part of Castle Mine Property

Inferred Mineral Resource	Ag g/t	Co g/t	Cu g/t	Ni g/t	Ag Eq g/t	Tonnes	Ag Oz	Ag Eq Oz
Total Inferred Mineral Resource	7,149	2,537	628	467	7,325	32,900	7,567,000	7,752,700

Average Silver Grade Comparison

Prairie Creek (TUF)

139

Tonopah West (BRC)

217

Panuco (VZLA)

289

Kitsault Valley (DV)

300

Juanicipio (MAG)

310

Castle East (NTH)

8,582

Silver grades based on published NI 43-101 mineral resource estimates. Castle East per Nord Precious Metals Mining Inc.; peer grades per respective company disclosures.

Properties are 100%-owned, minor NSR
 Access to the Castle Mine Site via Hwy560W from Elk Lake.



Exceptionally rich, narrow veins extending tens to hundreds of meters, hosting native silver with Ag-Co-Ni-As-Bi mineralization in dense parallel vein and fracture networks.



Castle East: Castle Property

Boasts Highest Silver Grades in the World

Drill Highlights include:

89,859 g/t Ag (2,621 oz/tonne Ag) over 0.30m

Gold Equivalent: 42.96 oz/tonne AuEq



50,583 g/t Ag (1,626 oz/tonne Ag) + 0.30% Co over 0.60m

Gold Equivalent: 24.19 oz/tonne AuEq



70,380 g/t Ag (2,263 oz/tonne Ag) + 2.61% Co over 0.30m

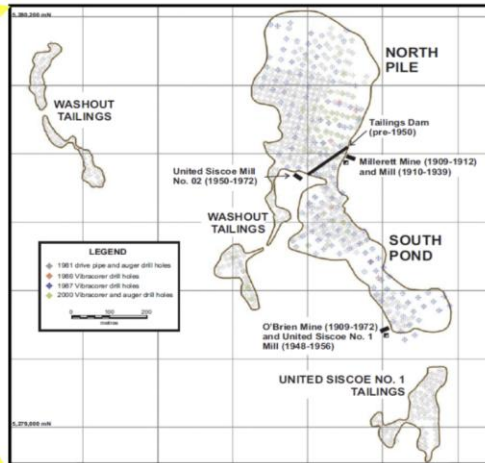
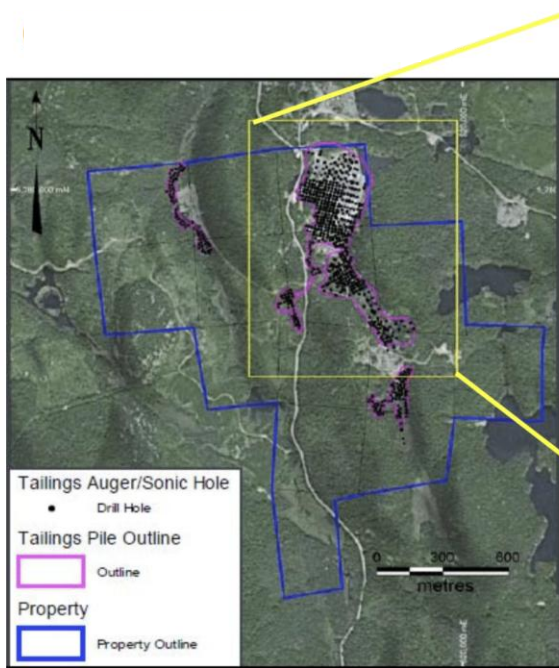
Gold Equivalent: 33.65 oz/tonne AuEq



Castle East is only the beginning — over 2 km between Castle East and the historic Castle Mine remains largely unexplored by modern methods

Nord Precious Metals

Gowganda Tailings



Miller Lake- O'Brien tailings deposit recently acquired and undergoing further evaluation.

Cut-off Grade (Ag g/t)	Tonnes	Grade (g/t)	Ozs
5.0 g/t	1,946,465	47.3	2,961,665
10 g/t	1,937,520	47.5	2,959,487
20 g/t	1,903,081	48.1	2,941,810
30 g/t	1,743,690	50.1	2,806,483
40 g/t	1,112,423	58.2	2,083,075

From 2011 historic resource estimate

Engineering Support Retained for Tailings Reprocessing at Castle Mine Project

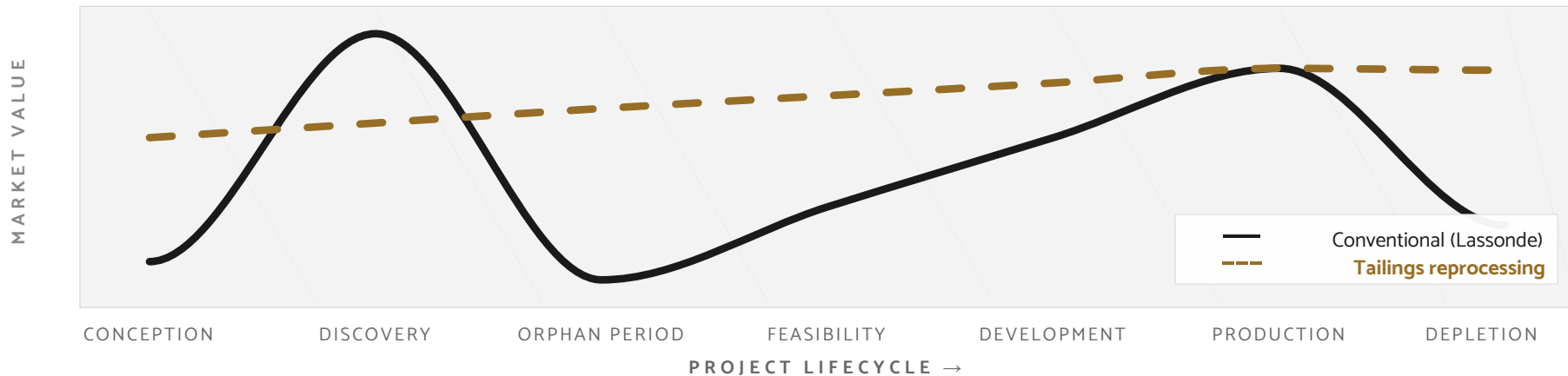
Published in 2020



Long Term Value Creation

The Flattened Curve

Tailings reprocessing compresses the mining lifecycle: from orphan period to production in months, not decades.



01	TAILINGS ON SURFACE	02	GRADE UPLIFT ECONOMICS	03	RESTART, NOT GREENFIELD	04	3M OZ/YR ALREADY POURING	05	HUB-AND-SPOKE RESILIENCE	06	DRILLING BUILDS FUTURE FEED
	1.94 Mt @ 47.5 g/t Ag		47.5 → 2,114 g/t		8 past-prod shafts		1,000 oz Ag/yr (TTL)		Stockpile by grade		Past prod = pipeline



Corporate Overview

Corporate Details

\$32.75M

Market Cap
12-05-2026

0.24 CAD

Share price
12-05-2026

0.11-0.47

52 week share price
Range

5.2%

Insider Held
05-2026

136,359,089

Issued & Outstanding
05-2026

65,712,285

Warrants & Options
Outstanding
06-2026

NTH
TSX-V

QN3
FF

CCWOF
OTCQB

1D 5D 1M 3M 6M 1Y 5Y ALL



Resource

7.5M oz

Silver Inferred
Resource Deposit Size
05-2021 43-101 (2)

8,582 g/t

Castle East Average
Resource Grade
(250 oz/ton) 05-2021 (2)



Coverage

TSX
Venture50[™]

Nord Precious
Metals V50:
2021, 2020

TSX Venture 50 is a ranking of the 50 top-performing companies on TSX Venture Exchange over the last year.

Companies are ranked based on three equally-weighted criteria of one-year share price appreciation, market capitalization growth, and Canadian consolidated trading value.

Upcoming
Analyst
Coverage





Management & Board



Frank Basa
Chairman & CEO

28+ years in hydrometallurgical engineering. Designed and operated plants processing 3M oz silver annually. Led TTL acquisition and upgrade. Previously technical lead at major operations globally.



Heidi Gutte
Chief Financial
Officer

15+ years experience with publicly-traded mining companies, specializing in corporate finance, IFRS reporting, audit preparation and response, tax optimization, corporate compliance. Bachelor's degree in computer engineering and member of Chartered Professional Accountants of British Columbia and Canada.



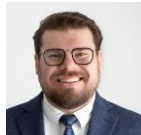
Matthew Halliday
Technical Advisor
and Director

13+ years in exploration and as a resource geologist with Kirkland Lake Gold, First Cobalt and SGS Geostat. Led exploration program that discovered Castle East. Expert in Cobalt camp's vein systems. Published research on camp geology. Instrumental in expanding resource from 2M to 7.5M oz.



Daniel Barrette
Director

Canadian mining executive with 20 + years of experience in corporate development, project structuring, and financing in the mining sector. Held leadership roles in both public and private companies, with expertise in strategic partnerships, project advancement, and capital markets.



Yannick Benoit
Government
Affairs Advisor

Yannick Benoit is a corporate and commercial lawyer whose practice spans mining, forestry, and natural resource transactions. He has served as an advisor to NORCAT, Northern Ontario Angels, and the Ontario Bar Association.



FRANK BASA P.Eng
CEO President

frank@nordpreciousmetals.com
+1 416 625 2342

WAYNE CHEVELDAYOFF
Corporate Communications

waynecheveldayoff@gmail.com
+1 416-710-2410

OFFICE

1 Presley Street
Cobalt Ontario
POJ 1K0

nordpreciousmetals.com



APPENDIX

TSX-V: NTH . OTCQB: CCWOF . FF: QN3



Castle East Project

First Ever Resource at the Camp

Mineral Resource Estimate at Castle East (43-101)

	Tonnes	Ag g/t	Co g/t	Cu g/t	Ni g/t	AgEq g/t	Ag oz	AgEq oz
Zone 1A	8,100	7,960	946	349	790	8,042	2,073,000	2,094,200
Zone 1B	19,300	8,843	2,308	325	336	8,998	5,487,200	5,583,200
Zone 2A	5,500	38	5,673	2,101	453	426	6,800	75,300
Total	32,900	7,149	2,537	628	467	7,325	7,567,000	7,752,700

Average Silver Grade (zone 1A,1B): 8,582 g/t (250 Ag oz/ton)

Total: 7.5 m oz Inferred Resource

Mineral resources that are not mineral reserves do not have demonstrated economic viability. For full details, see the following report filed on Sedar and on the Company's website: NI 43-101 Technical Report Update for Castle East, Ontario, Canada, Effective date: 30 April, 2021 Issue date: 25 May, 2021 prepared by GoldMinds Geoservices Inc. by Independent QP Merouane Rachidi, P. Geo., Ph.D in accordance with National Instrument 43-101. Mineral Resource is reported with mineable shape cut-off grade equivalent to 125\$USD (258 g/t AgEq) including mining, shipping and smelting cost with recovery of 95%.



1987 Kilborn Feasibility Study

325,000 oz Silver/Year for 7 Years at Gowganda

1

1,000 TPD / 8-month seasonal

225,000 tons processed per year

2

325,000 oz Ag/year × 7 years

~2.0M recoverable oz @ 85% recovery

3

49.3% IRR at US\$12/oz

Kilborn projection (1987 dollars)

4

Validated across four decades

Six independent test programs, 1981–2011

RESOURCE BASE

1,827,000

tons of proven tailings @ 1.43 oz/t Ag

764

drill holes across 3 campaigns (1981, 86–87, 2000)

98.9%

silver precipitation efficiency (Merrill–Crowe)

\$4.5M

CAPEX in 1987 CDN;
\$1.255M/yr OPEX



FINANCIAL SENSITIVITY

Modelled at \$6–\$12/oz – economics scale with silver price

Silver Price (US\$/oz)	Capital (CDN)	IRR	NPV @ 15%
\$6	\$4.7M	7.8%	(\$618K)
\$8	\$4.7M	24.7%	\$767K
\$10	\$4.7M	37.3%	\$1,586K
\$12	\$4.7M	49.3%	\$2,257K

AT CURRENT SILVER PRICES

49.3%

Internal Rate of Return

Modelled at US\$12/oz silver

NPV (15%): +\$2,257K

Kilborn 1987 base case – economics flip from negative at \$6/oz to strongly positive at \$12/oz.

Source: Kilborn (1987). NPV at 15% discount. 1987 CDN dollars.

Today's silver price exceeds Kilborn's \$12/oz top-case scenario by a wide margin.

Nord Precious Metals Sustainability



Environmental

Mining and processing of metals critical for the **clean energy transition**.

Rehabilitation of past-producing properties through re-processing tailings and restoring forested areas and trails.

Development and use of **clean processes** for Temiskaming Testing Labs and Re-20x

Social

Agreements with **Matachewan First Nation, Temagami First Nation, and the Teme-Augama Anishnabai** to ensure responsible development of properties within First Nations traditional territory.

Governance

Our values are guided by those laid out by the **Responsible Mining Foundation**. We undertake the appropriate engagement that each stakeholder requires for their needs.



Nord Precious Metals

End Notes

1. 7.2 moz beaver, 9.4Moz castle, 40.7Moz miller lake
2. Historic Resource. For full details, see the following report filed on Sedar and on the Company's website: NI 43-101 Technical Report Update for Castle East, Ontario, Canada, Effective date: 30 April, 2021 Issue date: 25 May, 2021 prepared by GoldMinds Geoservices Inc. by Independent QP Merouane Rachidi, P. Geo., Ph.D in accordance with National Instrument 43-101. Mineral Resource is reported with mineable shape cut-off grade equivalent to 125\$USD (258 g/t AgEq) including mining, shipping and smelting cost with recovery of 95%.