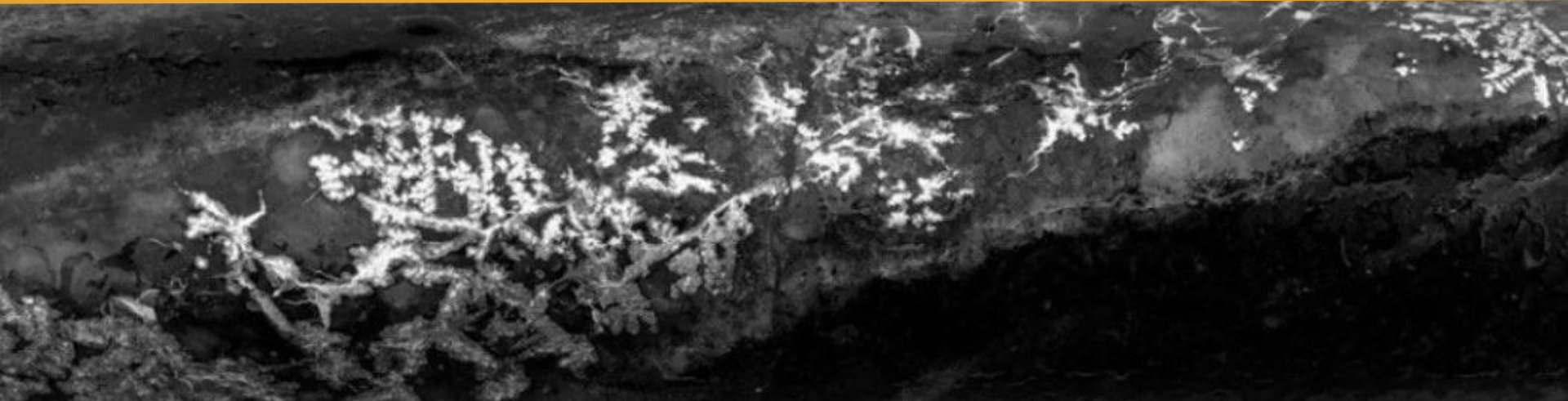


# NORD PRECIOUS METALS

## Corporate Presentation

June 2026

TSX-V: NTH . OTCQB: NPMMF . FF: QN3



# FORWARD LOOKING STATEMENTS



## **DISCLAIMER**

Neither the TSX Venture Exchange nor its Regulation Service Provider (as that term is defined in the policies of the TSX Venture Exchange) accepts responsibility for the adequacy or accuracy of this material.

This presentation may contain forward-looking statements including but not limited to comments regarding mineral resources and the timing and content of upcoming work programs, geological interpretations, receipt of property titles, potential mineral recovery processes, etc. Forward-looking statements address future events and conditions and therefore, involve inherent risks and uncertainties.

Actual results may differ materially from those currently anticipated in such statements. The Company does not undertake to update any forward looking information in this presentation or other communications unless required by law.

## **QUALIFIED PERSON**

The technical information in this corporate presentation was reviewed and approved by Nord Precious Metals Mining Inc. Chief Executive Officer Frank J. Basa, P.Eng., who is a Qualified Person in accordance with National Instrument 43-101.



# Nord Precious Metals

## Why Silver?

### 10-Yr Silver Price Chart



source: tradingeconomics.com



# Snapshot

Previous producing mines

**57 Moz** <sup>(1)</sup>

Combined Castle, Beaver, Miller Lake

Ontario Canada

**Tier 1**

Jurisdiction

Market Cap

**\$22.02M CAD**

09-06-26

Share Price

**0.16 CAD**

09-06-26

Strong relationship with

**First Nations**

in place with agreements

**Large Exploration Potential**

In Miller Lake Basin, Where Only Periphery Has Been Explored

Excellent

**infrastructure**

Quick access to labour force

High grades

**8,582 g/t**

Inferred average grade

\*Historic resource

Created with TradingView.com, Jun 09, 2026 17:07 UTC-4



TradingView

(1) 7.2 Moz Beaver, 9.4 Moz Castle, 40.7 Moz Miller lake

Nord Precious Metals

# Cobalt Camp



Ontario is a **Tier 1** mining jurisdiction

The Cobalt Camp is one of the world's highest-grade primary silver districts, with

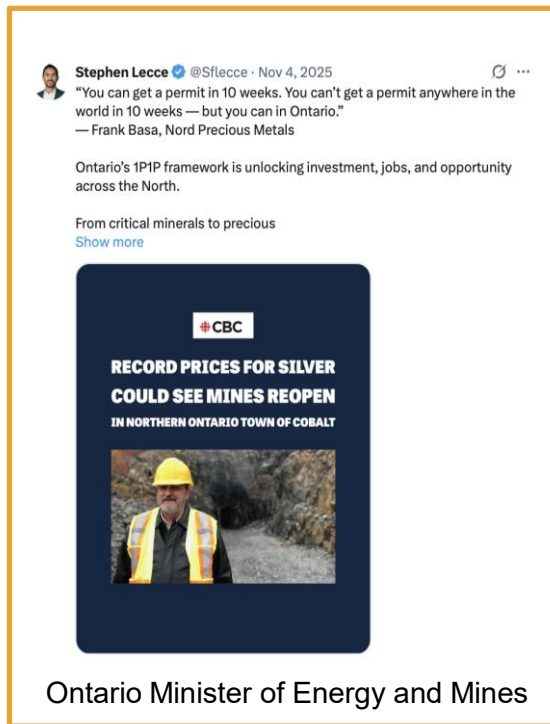
**500 Moz+**

of historic production and dense network of past-producing mines.

**Narrow, high-grade vein mining**



# The Moment for Ontario Silver

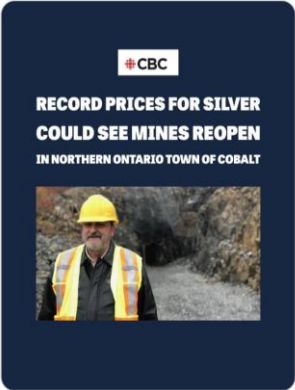


**Stephen Lecce** @Sflecce · Nov 4, 2025

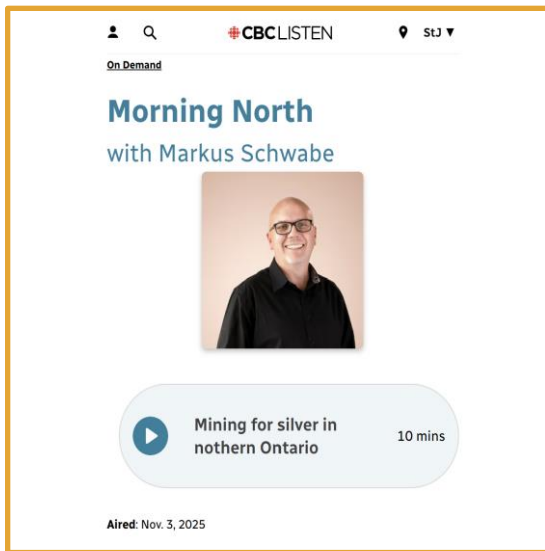
“You can get a permit in 10 weeks. You can’t get a permit anywhere in the world in 10 weeks — but you can in Ontario.”  
— Frank Basa, Nord Precious Metals

Ontario’s 1PIP framework is unlocking investment, jobs, and opportunity across the North.

From critical minerals to precious  
[Show more](#)



**Ontario Minister of Energy and Mines**




**CBC LISTEN** StJ

On Demand

### Morning North

with Markus Schwabe



Mining for silver in northern Ontario 10 mins

Aired: Nov. 3, 2025

**Battery Mineral Resources Announces Closing of Sale of Gowganda Claims to Nord Precious Metals**



## CIMMAGAZINE

NEWS

### Ontario’s new regulation aims to facilitate the recovery of minerals from mine waste, but many hurdles remain, experts say

By Kelsey Rolfe | February 20, 2025



**Canadian Institute of Mining**

ONTARIO

PROJECTS

- Gold / Silver Projects
- Silver Mining Camps
- Major Road
- Minor Road
- Fault
- Diabase
- Huronian Sediments

- Nord Precious Metals
- IAMGOLD
- Alamos Gold
- Agnico Eagle
- Brixton Metals
- Staked

0 10 20 km

**YOUNG-DAVIDSON MINE**  
Alamos Gold  
P&P: 2.98 Moz Au, M&I: 1.49 Moz Au

**CASTLE MINE PROPERTY**

**GOWGANDA SILVER TAILINGS**  
1.94 Mt @ 47.5 g/t Ag (~2.96 Moz Ag)

**CÔTÉ GOLD PROJECT**  
IAMGOLD  
P&P: 7.3 Moz Au

**JUBY GOLD PROJECT**  
Aris Gold Corp.  
M&I: 1.0 Moz Au @ 1.5 g/t Au

**MACASSA MINE**  
Agnico Eagle  
P&P: 2.20 Moz Au, M&I: 0.68 Moz Au

**UPPER BEAVER PROJECT**  
Agnico Eagle  
P&P: 2.80 Moz Au, 54.9 kt Cu  
Ind.: 0.50 Moz Au

**LANGIS MINE**  
Brixton Metals  
Hist. Prod.: 10.0 Moz Ag

**TEMISKAMING TESTING LAB / MILL**  
Permitted Processing Facility,  
Commissioned Gravity Circuit,  
Bullion Furnace, Analytical Lab

**SILVER CENTRE MINES**  
Hist. Prod.: 20.0 Moz Ag

**MAIN COBALT CAMP**  
Hist. Prod.: >500 Moz Ag

SOUTH LORRAIN CAMP



QUEBEC

CASEY TWP CAMP

Cobalt

Englehart

CADILLAC-LARDER FAULT ZONE

LAKE TEMISKAMING STRUCTURE

ELK LAKE CAMP

GOWGANDA CAMP

Gowganda

Shining Tree

RIDEOUT SHEAR ZONE

144

65

560

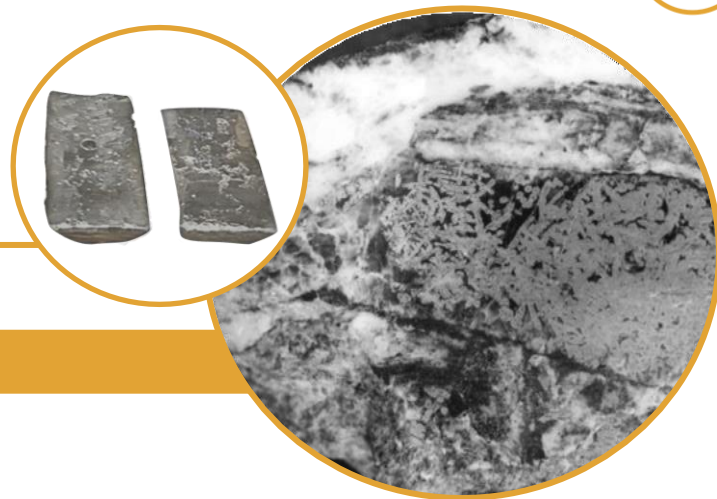
~100 km

11



# High Level Strategy

All Properties 100% Owned



## Gowganda Camp Consolidation

**Primary Silver**

**Secondary Cobalt Copper Nickel**

### Tailings Re-Processing

Gowganda (Miller Lake-O'Brien):  
47.5 g/t, 1,940,000 tonnes



Castle Mine:  
459 g/t Ag

### Exploration

Castle:  
Past producer:  
9.4 Moz Ag,  
376 K lbs Co

Miller Lake-O'Brien:  
Produced 40.7 Moz Ag  
785.7 K lbs Co

Castle East:  
Historic Inferred Average  
Grade 8,582 g/t, 32.9 K  
tonnes



**Castle Mine**  
PROJECT



**CASTLE MINE**  
Hist. Prod.: **9,410,095 oz Ag,**  
**376,392 lbs Co** (Castle-Trethewey)

UPPER BONSTALL

LOWER BONSTALL

MILLER LAKE-O'BRIEN  
**43.2 Moz Ag, 787,350 lbs Co**

**GOWGANDA SILVER TAILINGS**  
**1.94 Mt @ 47.5 g/t Ag for**  
**~2.96 Moz Ag**

CASTLE NO. 1

WALSH

TONOPAH

Hist. Prod.: **~60 Moz Ag**  
within 2km radius

MILLERETTE  
**611,822 oz Ag**

CAPITOL  
**10.8 Moz Ag, 209,662 lbs Co**

**CASTLE EAST DISCOVERY**  
**0.3m @ 89,853 g/t Ag**

MORRISON

# Properties

Group of properties in the Historic Cobalt Camp

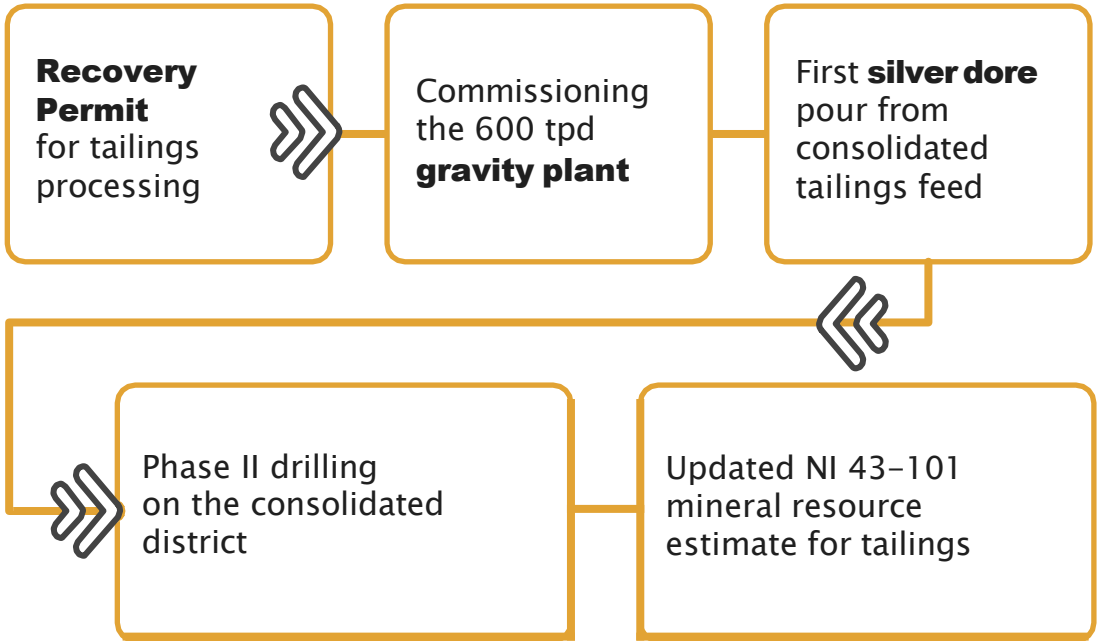
- Newly Acquired BMR Leases
- Nord Mining Leases
- Nord Mining Claims
- Staked
- X Past-Producing Mine





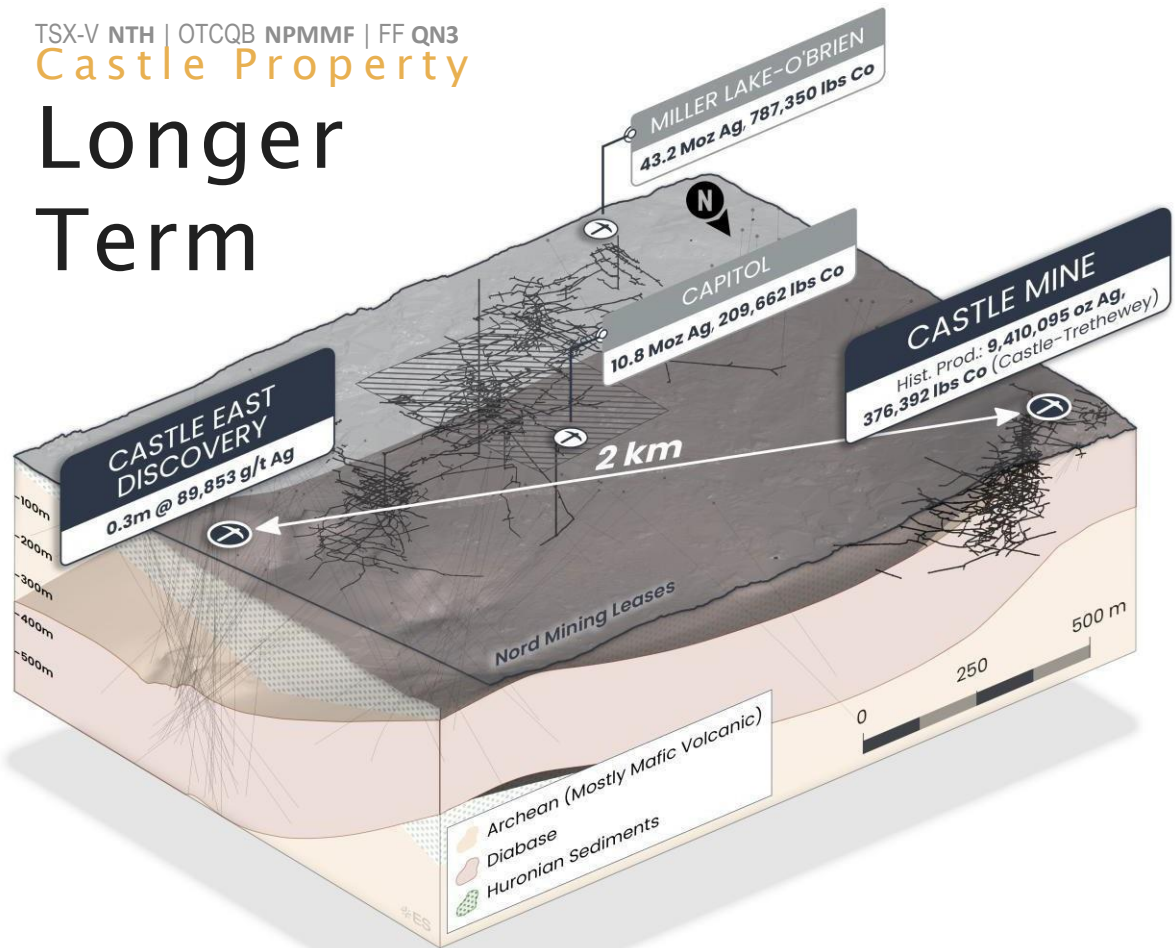
## Next Year

# Short Term Schedule





# Longer Term



## Medium-term

30,000-metre drill programme underway. Targeting boundary zones between past producers for the first time.

## Long-term

District-scale resource growth. Largest consolidated land package in the district's history. Over half a billion ounces produced historically. Alternative extraction scenarios under early evaluation.

# Castle Mine

Past producer of **9.4 million ounces silver** and **376,000 lbs cobalt.**

- 3 shafts accessing 11 levels to 259 m depth
- Underground drilling returned up to 5.2% Co and 13,208 g/t Ag
- Miller Creek tailings: up to 411 g/t AgEq
- Direct access via Hwy 560W from Elk Lake
- Contiguous to multiple historic mines





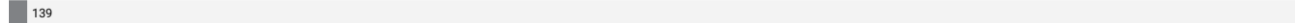
# Castle East Silver

\* part of Castle Mine Property

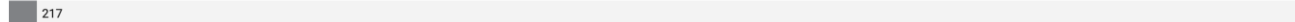
Inferred Mineral Resource	Ag g/t	Co g/t	Cu g/t	Ni g/t	Ag Eq g/t	Tonnes	Ag Oz	Ag Eq Oz
Total Inferred Mineral Resource	7,149	2,537	628	467	7,325	32,900	7,567,000	7,752,700

## Average Silver Grade Comparison

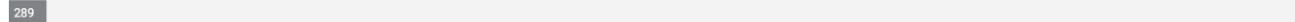
Prairie Creek (TUF)



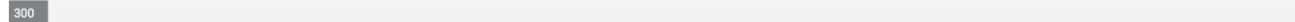
Tonopah West (BRC)



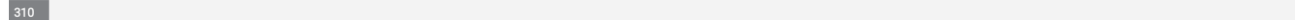
Panuco (VZLA)



Kitsault Valley (DV)



Juanicipio (MAG)



Castle East (NTH)



Silver grades based on published NI 43-101 mineral resource estimates. Castle East per Nord Precious Metals Mining Inc.; peer grades per respective company disclosures.

Access to the Castle Mine Site via Hwy 560W from Elk Lake.



Exceptionally rich, narrow veins extending tens to hundreds of meters, hosting native silver with Ag-Co-Ni-As-Bi mineralization in dense parallel vein and fracture networks.

## Castle East: Castle Property

# Boasts Highest Silver Grades in the World

Drill Highlights include:

89,859 g/t Ag (2,621 oz/tonne Ag) over 0.30m



50,583 g/t Ag (1,626 oz/tonne Ag) + 0.30% Co over 0.60m

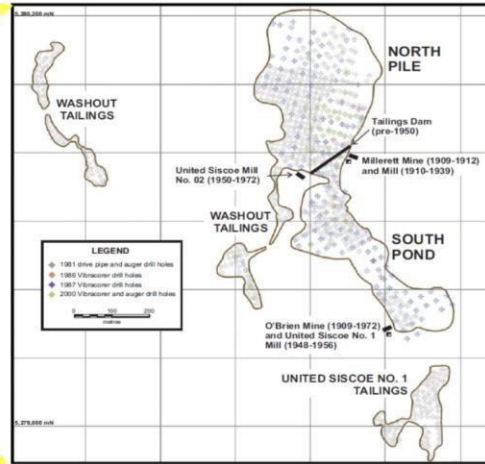
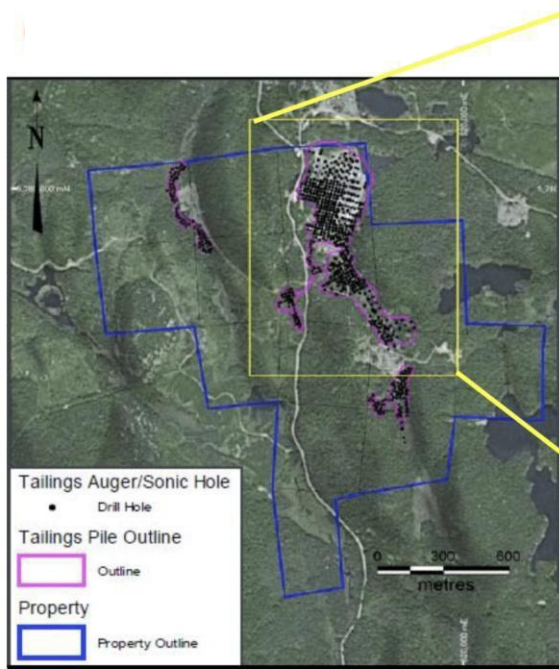


70,380 g/t Ag (2,263 oz/tonne Ag) + 2.61% Co over 0.30m



Castle East is only the beginning — over 2 km between Castle East and the historic Castle Mine remains largely unexplored by modern methods.

# Gowganda Tailings



Miller Lake– O'Brien tailings deposit recently acquired and undergoing further evaluation.

Cut-off Grade (Ag g/t)	Tonnes	Grade (g/t)	Ozs
5.0 g/t	1,946,465	47.3	2,961,665
10 g/t	1,937,520	47.5	2,959,487
20 g/t	1,903,081	48.1	2,941,810
30 g/t	1,743,690	50.1	2,806,483
40 g/t	1,112,423	58.2	2,083,075

From 2011 historic resource estimate

Engineering Support Retained for Tailings Reprocessing at Castle Mine Project

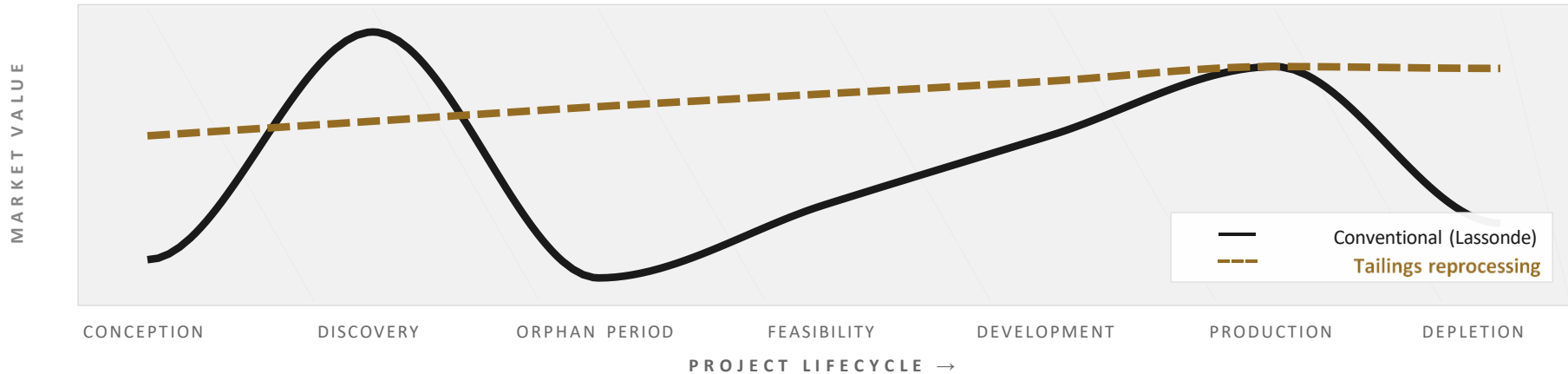
Published in 2023



## Long Term Value Creation

# The Flattened Curve

Tailings reprocessing compresses the mining lifecycle: from orphan period to production in months, not decades.



<p><b>01</b> TAILINGS ON SURFACE</p> <p>1.94 Mt @ 47.5 g/t Ag</p>	<p><b>02</b> GRADE UPLIFT ECONOMICS</p> <p>47.5 → 2,114 g/t</p>	<p><b>03</b> RESTART, NOT GREENFIELD</p> <p>8 past-prod shafts</p>	<p><b>04</b> 3M OZ/YR ALREADY POURING</p> <p>1,000 oz Ag/yr (TTL)</p>	<p><b>05</b> HUB-AND-SPOKE RESILIENCE</p> <p>Stockpile by grade</p>	<p><b>06</b> DRILLING BUILDS FUTURE FEED</p> <p>Past prod = pipeline</p>
---	---	--	---	---	--



# Corporate Overview

## Corporate Details

**\$22.02M**

Market Cap  
22-06-2026

**0.16 CAD**

Share price  
22-06-2026

**0.11-0.47**

52 week share price  
Range

**5.2%**

Insider Held  
06-2026

**137,619,089**

Issued & Outstanding  
05-2026

**65,257,285**

Warrants & Options  
Outstanding  
06-2026

Created with TradingView.com, Jun 09, 2026 17:07 UTC-4



TradingView

## Resource

**7.5M oz**

Silver Inferred  
Resource Deposit Size  
05-2021 43-101 (2)

**8,582 g/t**

Castle East Average  
Resource Grade  
(250 oz/ton) 05-2021 (2)

**NTH**

TSX-V

**QN3**

FF

**NPMMF**

OTCQB



# Management & Board



**Frank Basa**  
Chairman & CEO

28+ years in hydrometallurgical engineering. Designed and operated plants processing 3M oz silver annually. Led TTL acquisition and upgrade. Previously technical lead at major operations globally.



**Heidi Gutte**  
Chief Financial Officer

15+ years experience with publicly-traded mining companies, specializing in corporate finance, IFRS reporting, audit preparation and response, tax optimization, corporate compliance. Bachelor's degree in computer engineering and member of Chartered Professional Accountants of British Columbia and Canada.



**Matthew Halliday**  
Technical Advisor and Director

13+ years in exploration and as a resource geologist with Kirkland Lake Gold, First Cobalt and SGS Geostat. Led exploration program that discovered Castle East. Expert in Cobalt camp's vein systems. Published research on camp geology. Instrumental in expanding resource from 2M to 7.5M oz.



**Daniel Barrette**  
Director

Canadian mining executive with 20 + years of experience in corporate development, project structuring, and financing in the mining sector. Held leadership roles in both public and private companies, with expertise in strategic partnerships, project advancement, and capital markets.



**Yannick Benoit**  
Government Affairs Advisor

Yannick Benoit is a corporate and commercial lawyer whose practice spans mining, forestry, and natural resource transactions. He has served as an advisor to NORCAT, Northern Ontario Angels, and the Ontario Bar Association.



**FRANK BASA P.Eng**  
**CEO President**

[frank@nordpreciousmetals.com](mailto:frank@nordpreciousmetals.com)  
+1 416 625 2342

**WAYNE CHEVELDAYOFF**  
**Corporate Communications**

[waynecheveldayoff@gmail.com](mailto:waynecheveldayoff@gmail.com)  
+1 416-710-2410

**OFFICE**

1 Presley Street  
Cobalt Ontario  
POJ 1K0

[nordpreciousmetals.com](http://nordpreciousmetals.com)



# APPENDIX

---

TSX-V: NTH . OTCQB: NPMMF . FF: QN3



## Castle East Project

# First Ever Resource at the Camp

## 2021 Mineral Resource Estimate at Castle East (43-101)

	Tonnes	Ag g/t	Co g/t	Cu g/t	Ni g/t	AgEq g/t	Ag oz	AgEq oz
Zone 1A	8,100	7,960	946	349	790	8,042	2,073,000	2,094,200
Zone 1B	19,300	8,843	2,308	325	336	8,998	5,487,200	5,583,200
Zone 2A	5,500	38	5,673	2,101	453	426	6,800	75,300
<b>Total</b>	<b>32,900</b>	<b>7,149</b>	<b>2,537</b>	<b>628</b>	<b>467</b>	<b>7,325</b>	<b>7,567,000</b>	<b>7,752,700</b>

Average Silver Grade (zone 1A,1B): 8,582 g/t (250 Ag oz/ton)

Total: 7.5 m oz Inferred Resource

Mineral resources that are not mineral reserves do not have demonstrated economic viability. This mineral resource is now regarded as a historical mineral resource. For full details, see the following report filed on Sedar and on the Company's website: NI 43-101 Technical Report Update for Castle East, Ontario, Canada, Effective date: 30 April, 2021 Issue date: 25 May, 2021 prepared by GoldMinds Geoservices Inc. by Independent QP Merouane Rachidi, P. Geo., Ph.D in accordance with National Instrument 43-101. Mineral Resource is reported with mineable shape cut-off grade equivalent to 125\$USD (258 g/t AgEq) including mining, shipping and smelting cost with recovery of 95%.



## 1987 Kilborn Feasibility Study

# 325,000 oz Silver/Year for 7 Years at Gowganda

1

**1,000 TPD / 8-month seasonal**

225,000 tons processed per year

2

**325,000 oz Ag/year × 7 years**

~2.0M recoverable oz @ 85% recovery

3

**49.3% IRR at US\$12/oz**

Kilborn projection (1987 dollars)

4

**Validated across four decades**

Six independent test programs, 1981–2011

### RESOURCE BASE

**1,827,000**

tons of proven tailings @ 1.43 oz/t Ag

**764**

drill holes across 3 campaigns (1981, 86–87, 2000)

**98.9%**

silver precipitation efficiency (Merrill–Crowe)

**\$4.5M**

CAPEX in 1987 CDN;  
\$1.255M/yr OPEX



## FINANCIAL SENSITIVITY

# Modelled at \$6–\$12/oz — economics scale with silver price

Silver Price (US\$/oz)	Capital (CDN)	IRR	NPV @ 15%
<b>\$6</b>	\$4.7M	<b>7.8%</b>	(\$618K)
<b>\$8</b>	\$4.7M	<b>24.7%</b>	\$767K
<b>\$10</b>	\$4.7M	<b>37.3%</b>	\$1,586K
<b>\$12</b>	\$4.7M	<b>49.3%</b>	\$2,257K

Source: Kilborn (1987). NPV at 15% discount. 1987 CDN dollars.

AT CURRENT SILVER PRICES

# 49.3%

Internal Rate of Return

Modelled at US\$12/oz silver

**NPV (15%): +\$2,257K**

Kilborn 1987 base case — economics flip from negative at \$6/oz to strongly positive at \$12/oz.

Today's silver price exceeds Kilborn's \$12/oz top-case scenario by a wide margin.

# Nord Precious Metals Sustainability

TSX-V NTH | OTCQB NPMMF | FF QN3

## Environmental

Mining and processing of metals critical for the **clean energy transition**.

**Rehabilitation of past-producing properties** through re-processing tailings and restoring forested areas and trails.

Development and use of **clean processes** for Temiskaming Testing Labs and Re-20x

---

## Social

Agreements with **Matachewan First Nation, Temagami First Nation, and the Teme-Augama Anishnabai** to ensure responsible development of properties within First Nations traditional territory.

---

## Governance

Our values are guided by those laid out by the **Responsible Mining Foundation**. We undertake the appropriate engagement that each stakeholder requires for their needs.

